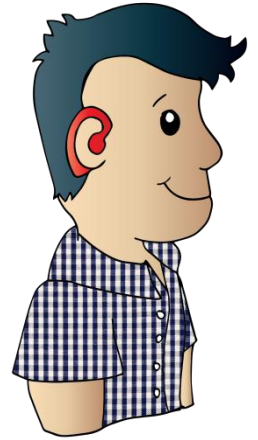




Supporting Students who are Deaf or Hard of Hearing



Provincial Inclusive Education Conference

Fort Garry Hotel
October 22, 2015
8:30 – 3:30

Go to www.dhhpiec.ca for session information and to register.

For conference information, please contact Nancy at
nancy.schenkeveld@gov.mb.ca or 204-918-2651.

Registration Information:

	<u>Before Oct. 2, 2015</u>	<u>After Oct. 2, 2015</u>
Professional	\$150 full day/ \$100 half day	\$180 full day/ \$130 half day
Educational Assistant	\$80 (full or half day)	\$100 (full or half day)
Parent	\$80 (full or half day)	\$100 (full or half day)
Student	\$80 (full or half day)	\$100 (full or half day)
Optional lunch	\$16.40	

Please make cheques payable to DHH PIEC and send them to:

DHH PIEC Conference
c/o CSHC
2 – 1325 Markham Rd.
Winnipeg, MB R3T 4J6

Join us for essential resources, knowledge and tools to build successful learning environments for students who are Deaf and Hard of Hearing.

